

Spiritual Pit CREW



Angels, Guides, Ascended Masters

Created by Kim Williams

Your Angels and Guides (I refer to them as my Pit Crew) have always and will always be with you. There are thousands upon thousands of Angels and Guides that can help you when you ask but remember this - you do indeed need to ask.

There are 12 Archangels. These beings (male or female) are of the highest and divine being - almost as though they sit at The Universe's (aka God, Spirit, the Divine) round table. They in turn then filter the information to the legions of Angels and Guides who work with us in our day to day lives.

The details of the 12 Archangels can be found further down with their speciality of gifts

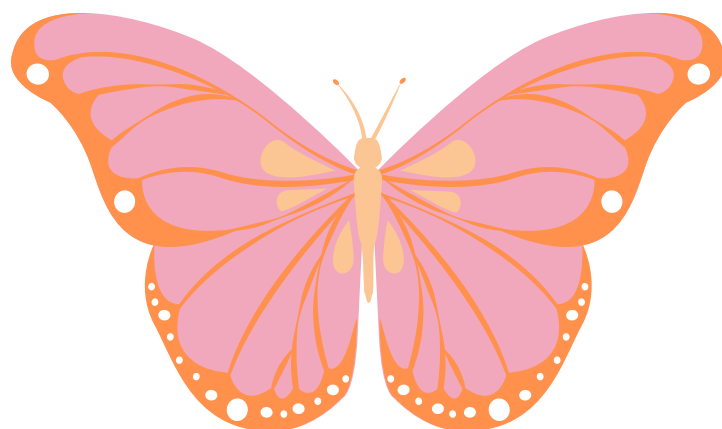


The best way to explain your Pit Crew to you is that they are a mix of your Guardian Angel (you have one for life), Guides (you have one for each part of your life – personal, professional, mixed) and The Archangels you can indeed call on any time you need too. If you have a particular career or life situation you are trying to attract you can call on your Pit Crew at anytime and ask them for help and guidance.

Your Pit Crew can also include passed over loved ones. If you have lost your parents or grandparents, you may actually feel their energy with you for love, strength and courage when needed.

The ways in which your Pit Crew will let you know that they are right beside you is you may feel an energy shift around you or as though someone has put their hand on you for comfort, you may start noticing little gifts such as feathers or coins on your path or even a particular line from a song plays over and over in your mind. These are just a few of the ways they can and will communicate with you. Your only job is to be open to receiving their support and guidance.

A little tip though – they will not nor can they make decisions for you. They can give you clues and signs but you ultimately need to make a decision which way to go or what you want to achieve. When you find yourself as "stuck", this generally means you have headf*cked yourself into not taking charge and making a decision. Remember that a step forward is better than the confusion or waiting for someone else to lead you. This is your life honey – enjoy it!!



How to work with your Spiritual Pit Crew

So on your journey into woo you may have indeed come across all different ways of being able to connect and notice your Pit Crew but I am going to let you in on a little something - it's actually not rocket science to connect with or co create awesomeness with your crew.

There is no need to meditate for hours on end or read and become kerfuddled by a book called "A Course in Miracles". If you choose to go ahead and read it then that is totally cool but you don't need it to achieve a connection with the Universe and your Pit Crew.

Honestly, all you need is a few moments to focus on your breathing and to come back into your heartspace. You can use tools such as journalling and angel/oracle/tarot cards to help facilitate a chat with your crew while you burn a candle and enjoy a coffee or tea. By writing your thoughts and feelings down you can achieve better clarity in the messages you receive from your Pit Crew.

Choose the tools and methods that suit you at that moment and don't feel restricted by the ways that other's connect with their PC.

You can come up with some awesome words such as "Please Pit Crew come on in and help me see the right step to take" or "OK Pit Crew - I fucked it up again and need help to move forward." You are human and can use a swear word or 2 - Your PC love you for who you are whether that be a perfect example of manners or swearsy pirate whench.

Notice all the thoughts and feelings that come to you once calling them in as that how your Crew will communicate with you.

Archangels

- Michael assists with confidence, safety and life purpose guidance. Call on Michael when you lovingly need to cut your cords from a person or situation and he will be of assistance to help.
Colour - Gold, Royal Blue/Purple Crystal - Sugilite
- Raphael is my go to in my healing work as he helps healers in their practice and education.
Colour - Emerald Green Crystal - Malachite and Emerald
- Gabriel is my go to when it comes to communicating with love and clarity in both my personal and professional life. His ability to help musicians and artists in their work is breathtaking.
Colour - Copper, Orange Crystal - Aquamarine and Moonstone
- I consider Ariel to be a partner when it comes to manifesting your needs here on earth. Ariel also helps in your connection to animals and nature.
Colour - Pale Pink Crystal - Rose Quartz
- Uriel is fantastic when it comes to lighting things up and leading the way. If you need something to come to you in an easier format, ask for Uriel to help.
Colour - Yellow Crystal - Amber
- Chamuel is your go to angel when you have lost your keys or something else. Call Chamuel in for assistance to help you find your way.
Colour Pale Green Crystal - Flourite

Archangels

- Jophiel Assists you with clearing the clutter from your life while keeping your thoughts and vibration high.
Colour Deep Pink Crystal - Pink Tourmaline
- Azrael Azrael is the angel tasked with helping souls cross over and those family members left behind to grieve and heal from loss
Colour Creamy White Crystal - Yellow Calcite
- Metatron Is the Angel specifically assigned to helping Indigo and Crystal children as well as being the time management go to. Metatron is able to assist in the healing arts and can show he is with you when you notice sacred geometry shapes.
Colour Violet and Green Crystal - watermelon tourmaline
- Sandalphon Sandalphon's gift is to deliver guidance and support to musicians as well as being the conduit for prayers and messages to and from the Universe.
Colour - Turquoise Crystal - Turquoise
- Haniel Guides you to trust your intuition and is the angel specific to helping woman help from emotional and physical issues.
Colour - Pale Blue Crystal - Moonstone
- Zadkiel Supports you in remembering your divine mission and spiritual origins as well all reminding you to choose forgiveness.
Colour - Deep Blue/Indigo Crystal - Lapis Lazuli

Archangels

Jeremiel

Assists in taking life reviews and developing and understanding clairvoyance and visions.

Colour - Dark Purple Crystal - Amethyst

Raziel

Helps to remember wisdom from past lifetimes. Can help with dream clarification and secrets of the Universe.

Colour - Rainbow Crystal - Clear Quartz

Raguel

Brings harmony to situations and relationships. Helps to facilitate new and wonderful relationships.

Colour - Pale Blue Crystal - Aquamarine



Setting a Ritual

While it may not always be convenient to sit in a pretty space and connect with your Crew, it's a great idea to set one up in your house so that you can indeed set it up with all of the things you need to make a good strong connection.

Also, by having your space ready to go with your journal, pens, candles, crystals and a card deck you are drawn to for that day, you can spend your time creating a connection quickly and start receiving information with minimal fuss.

Ok so here goes - there is no one rule, ritual or skill that you need to follow to create a connection with your Pit Crew. The only tool you will need is you - yep I just called you a tool. In setting up for your session, you may be drawn to place particular crystals or card decks in your space to use.

Go with your gut on this.

You may find that the Archangel who works with that crystal or colour has a message for you or is urging you to focus on a particular topic.



To place a little discipline around communicating with your Pit Crew, you can follow the following steps over a 21-28 day period. You will find that as you do, you will tweak it to fit you and your needs which is totally fine.

Ideally its best to avoid technology for at least an hour before wanting to sit and connect with your Pit Crew. This will change over time and you will find that you build up a connection with them in your day to day life but for now I encourage you to take a walk outside or even ground yourself via the bare feet on the grass method.

Another great way is to have a shower or relaxing bath. Water is a great way to shift energy around you and to be able to feel fresh when meeting with your Pit Crew.

Hop into comfy clothes or even pajamas and make yourself a cuppa. Keep technology out of your special sparkle space as much as you can. Turn your phone to silent at least and take the time out for yourself. Light a candle and call your crew in. Ensure that you have pen and paper at the ready. You can indeed have questions ready to go or just be open to receiving the message you need right now.

Go ahead and try the recorded meditation first stating "I invite only those of the highest energy and being to present themselves to me in this meditation."



Creating an "Altar of Sparkle Stuff"

I love to be able to set up an "Altar of Sparkle Stuff" at the start of each each week or around Full Moon/New Moon times.

For me, this is a space set up with my intentions for the week and then surrounding them with gorgeous crystals, fresh flowers and candle light. Mine is set up in my home office so that when I go to work on my goals, dreams and visions, I light my candles and call my Pit Crew in to support my work and join the fun.



PERSONAL PREFERENCE

Your ability to check in with your Spiritual Pit Crew become a very personal choice. I choose to go outside in my garden and just sit to ground and connect in or even spend time outside under the moon first thing in the morning.

Your body and spirit will let you know what you need to do to connect with your Spiritual Pit Crew - all you need to do is listen and trust knowing that you are being led and safe.

Crystals, card decks, books and sage burning are all ways in which people choose to connect with their support team.

Have fun and find out what works for you.



